

## OIL COOLER

### CONSTRUCTION CHARACTERISTICS

- ~ 10 mm O.D. seamless copper tube expanded into aluminium fins, with 2.1 mm fin space
- ~ casing in white pre-coated aluminium and galvanized steel or inox on request
- ~ axial 400V/3F/50Hz motorfans
- ~ on request:
  - protective treatment of coils
  - ATEX 94/9/CE conformity motorfans

## REFRIGERANTI OLIO

### CARATTERISTICHE COSTRUTTIVE

- ~ batteria realizzata con tubo di rame Ø 10 mm ed aletta di alluminio con passo aletta 2.1 mm
- ~ involucro in alluminio pre verniciato e lamiera zincata bianca o inox su richiesta
- ~ motoventilatori assiali 400V/3F/50Hz
- ~ a richiesta possibilità di:
  - trattamenti protettivi della batteria
  - motoventilatori a rispetto normativa ATEX 94/9/CE

EC MOTORS  
AVAILABLE



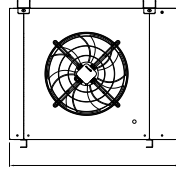
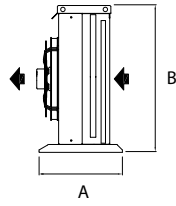
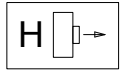
by  
ebmpapst



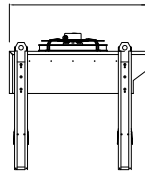
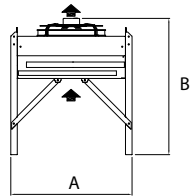
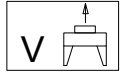
**RF**

Model Modello	OIL in temp.	OIL out temp.	Air temp. Temperatura dell'Aria	Nominal Capacity Potenza nominale $\Delta T=15K$ Tair 25° C	Oil Flow Portata olio	Oil pressure drop Caduta press.olio	Air Flow Portata aria	n° fans n° Ventilatori	Fans $\varnothing$	Sur- face Volu- me interno	Volu- me	Motorfan power consu- mption Assorbimento motoventilatori		Sound Pressure Pressione Sonora		Weight Peso	Connection Conessioni
	°C	°C	°C	kW	m <sup>3</sup> /h	kPa	m <sup>3</sup> /h	n°	mm	m <sup>2</sup>	dm <sup>3</sup>	A	Kw	dB(A) @ 10m	dB(A) @ 5m	kg	IN/OUT $\varnothing$ mm
<b>RF 511614</b>	80	55	27	27,60	2,20	75	7000	1	500	73	13	0,72	1,41	44	50	73	1" - 1"
<b>RF 511614</b>	80	55	32	22,90	1,80	62	7000	1	500	73	13	0,72	1,41	44	50	73	1" - 1"
<b>RF 511614</b>	80	55	36	19,40	1,50	52	7000	1	500	73	13	0,72	1,41	44	50	73	1" - 1"
<b>RF 511614</b>	80	55	43	13,10	1,10	35	7000	1	500	73	13	0,72	1,41	44	50	73	1" - 1"
<b>RF 511614</b>	100	55	27	32,00	1,40	52	7000	1	500	73	13	0,72	1,41	44	50	73	1" - 1"
<b>RF 511614</b>	100	55	32	27,20	1,20	44	7000	1	500	73	13	0,72	1,41	44	50	73	1" - 1"
<b>RF 511614</b>	100	55	36	23,50	1,00	38	7000	1	500	73	13	0,72	1,41	44	50	73	1" - 1"
<b>RF 511614</b>	100	55	43	16,90	0,80	27	7000	1	500	73	13	0,72	1,41	44	50	73	1" - 1"
<b>RF 512614</b>	80	55	27	44,00	3,40	53	14000	2	500	146	26	1,44	2,82	47	53	144	1 1/4"-1 1/4"
<b>RF 512614</b>	80	55	32	36,50	2,80	43	14000	2	500	146	26	1,44	2,82	47	53	144	1 1/4"-1 1/4"
<b>RF 512614</b>	80	55	36	30,50	2,40	36	14000	2	500	146	26	1,44	2,82	47	53	144	1 1/4"-1 1/4"
<b>RF 512614</b>	80	55	43	20,60	1,60	24	14000	2	500	146	26	1,44	2,82	47	53	144	1 1/4"-1 1/4"
<b>RF 512614</b>	100	55	27	50,50	2,20	36	14000	2	500	146	26	1,44	2,82	47	53	144	1 1/4"-1 1/4"
<b>RF 512614</b>	100	55	32	42,90	1,90	30	14000	2	500	146	26	1,44	2,82	47	53	144	1 1/4"-1 1/4"
<b>RF 512614</b>	100	55	36	36,90	1,60	26	14000	2	500	146	26	1,44	2,82	47	53	144	1 1/4"-1 1/4"
<b>RF 512614</b>	100	55	43	26,40	1,20	18	14000	2	500	146	26	1,44	2,82	47	53	144	1 1/4"-1 1/4"
<b>RF 521614</b>	80	55	27	48,50	3,80	30	14000	2	500	146	26	1,44	2,82	47	53	146	1 1/4"-1 1/4"
<b>RF 521614</b>	80	55	32	40,00	3,10	24	14000	2	500	146	26	1,44	2,82	47	53	146	1 1/4"-1 1/4"
<b>RF 521614</b>	80	55	36	33,60	2,60	20	14000	2	500	146	26	1,44	2,82	47	53	146	1 1/4"-1 1/4"
<b>RF 521614</b>	80	55	43	22,80	1,80	14	14000	2	500	146	26	1,44	2,82	47	53	146	1 1/4"-1 1/4"
<b>RF 521614</b>	100	55	27	64,00	2,80	53	14000	2	500	146	26	1,44	2,82	47	53	146	1 1/4"-1 1/4"
<b>RF 521614</b>	100	55	32	54,40	2,40	44	14000	2	500	146	26	1,44	2,82	47	53	146	1 1/4"-1 1/4"
<b>RF 521614</b>	100	55	36	46,90	2,10	38	14000	2	500	146	26	1,44	2,82	47	53	146	1 1/4"-1 1/4"
<b>RF 521614</b>	100	55	43	33,80	1,50	27	14000	2	500	146	26	1,44	2,82	47	53	146	1 1/4"-1 1/4"
<b>RF 611614</b>	80	55	27	38,10	3,00	44	11300	1	630	115	21	1,25	2,48	49	55	86	1 1/4"-1 1/4"
<b>RF 611614</b>	80	55	32	31,50	2,50	36	11300	1	630	115	21	1,25	2,48	49	55	86	1 1/4"-1 1/4"
<b>RF 611614</b>	80	55	36	26,40	2,10	30	11300	1	630	115	21	1,25	2,48	49	55	86	1 1/4"-1 1/4"
<b>RF 611614</b>	80	55	43	17,90	1,40	20	11300	1	630	115	21	1,25	2,48	49	55	86	1 1/4"-1 1/4"
<b>RF 611614</b>	100	55	27	45,80	2,00	40	11300	1	630	115	21	1,25	2,48	49	55	86	1 1/4"-1 1/4"
<b>RF 611614</b>	100	55	32	38,80	1,70	33	11300	1	630	115	21	1,25	2,48	49	55	86	1 1/4"-1 1/4"
<b>RF 611614</b>	100	55	36	33,40	1,50	29	11300	1	630	115	21	1,25	2,48	49	55	86	1 1/4"-1 1/4"
<b>RF 611614</b>	100	55	43	24,00	1,10	20	11300	1	630	115	21	1,25	2,48	49	55	86	1 1/4"-1 1/4"
<b>RF 612614</b>	80	55	27	69,00	5,40	80	22600	2	630	230	42	2,50	4,96	52	58	172	1 1/2"-1 1/2"
<b>RF 612614</b>	80	55	32	57,00	4,50	66	22600	2	630	230	42	2,50	4,96	52	58	172	1 1/2"-1 1/2"
<b>RF 612614</b>	80	55	36	47,80	3,70	55	22600	2	630	230	42	2,50	4,96	52	58	172	1 1/2"-1 1/2"
<b>RF 612614</b>	80	55	43	32,30	2,50	37	22600	2	630	230	42	2,50	4,96	52	58	172	1 1/2"-1 1/2"
<b>RF 612614</b>	100	55	27	71,80	3,10	27	22600	2	630	230	42	2,50	4,96	52	58	172	1 1/2"-1 1/2"
<b>RF 612614</b>	100	55	32	60,90	2,70	23	22600	2	630	230	42	2,50	4,96	52	58	172	1 1/2"-1 1/2"
<b>RF 612614</b>	100	55	36	52,30	2,30	20	22600	2	630	230	42	2,50	4,96	52	58	172	1 1/2"-1 1/2"
<b>RF 612614</b>	100	55	43	37,50	1,70	14	22600	2	630	230	42	2,50	4,96	52	58	172	1 1/2"-1 1/2"

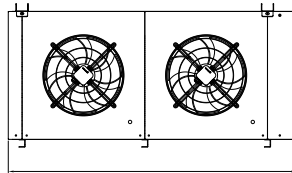
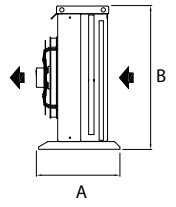
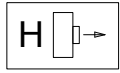
Model Modello	OIL in temp.	OIL out temp.	Air temp. Temperatura dell'Aria	Nominal Capacity Potenza nominale $\Delta T=15K$ Tair 25° C	Oil Flow Portata olio	Oil pressure drop Caduta press.olio	Air Flow Portata aria	n° fans n° Ventilatori	Fans $\varnothing$	Sur- face Volu- me interno	Volu- me	Motorfan power consu- mption Assorbimento motoventilatori		Sound Pressure Pressione Sonora		Weight Peso	Connection Connessioni
	°C	°C	°C	kW	m <sup>3</sup> /h	kPa	m <sup>3</sup> /h	n°	mm	m <sup>2</sup>	dm <sup>3</sup>	A	Kw	dB(A) @ 10m	dB(A) @ 5m	kg	IN/OUT $\varnothing$ mm
<b>RF 621614</b>	80	55	27	76,10	5,90	44	22600	2	630	230	42	2,50	4,96	52	58	182	1 1/2"-1 1/2"
<b>RF 621614</b>	80	55	32	63,00	4,90	36	22600	2	630	230	42	2,50	4,96	52	58	182	1 1/2"-1 1/2"
<b>RF 621614</b>	80	55	36	52,80	4,10	30	22600	2	630	230	42	2,50	4,96	52	58	182	1 1/2"-1 1/2"
<b>RF 621614</b>	80	55	43	35,80	2,80	20	22600	2	630	230	42	2,50	4,96	52	58	182	1 1/2"-1 1/2"
<b>RF 621614</b>	100	55	27	61,50	4,00	30	22600	2	630	230	42	2,50	4,96	52	58	182	1 1/2"-1 1/2"
<b>RF 621614</b>	100	55	32	77,60	3,40	33	22600	2	630	230	42	2,50	4,96	52	58	182	1 1/2"-1 1/2"
<b>RF 621614</b>	100	55	36	66,80	2,90	29	22600	2	630	230	42	2,50	4,96	52	58	182	1 1/2"-1 1/2"
<b>RF 621614</b>	100	55	43	48,00	2,10	20	22600	2	630	230	42	2,50	4,96	52	58	182	1 1/2"-1 1/2"
<b>RF 811616</b>	80	55	27	60,00	4,60	50	18500	1	800	205	36	1,94	3,90	48	54	184	1 1/2"-1 1/2"
<b>RF 811616</b>	80	55	32	48,80	3,80	42	18500	1	800	205	36	1,94	3,90	48	54	184	1 1/2"-1 1/2"
<b>RF 811616</b>	80	55	36	41,00	3,20	35	18500	1	800	205	36	1,94	3,90	48	54	184	1 1/2"-1 1/2"
<b>RF 811616</b>	80	55	43	27,70	2,20	23	18500	1	800	205	36	1,94	3,90	48	54	184	1 1/2"-1 1/2"
<b>RF 811616</b>	100	55	27	68,00	3,90	35	18500	1	800	205	36	1,94	3,90	48	54	184	1 1/2"-1 1/2"
<b>RF 811616</b>	100	55	32	57,80	2,50	29	18500	1	800	205	36	1,94	3,90	48	54	184	1 1/2"-1 1/2"
<b>RF 811616</b>	100	55	36	49,60	2,20	25	18500	1	800	205	36	1,94	3,90	48	54	184	1 1/2"-1 1/2"
<b>RF 811616</b>	100	55	43	35,60	1,50	18	18500	1	800	205	36	1,94	3,90	48	54	184	1 1/2"-1 1/2"
<b>RF 812616</b>	80	55	27	123,20	5,30	65	37000	2	800	410	72	3,88	7,80	51	57	368	2" - 2"
<b>RF 812616</b>	80	55	32	104,40	4,50	55	37000	2	800	410	72	3,88	7,80	51	57	368	2" - 2"
<b>RF 812616</b>	80	55	36	89,70	3,90	47	37000	2	800	410	72	3,88	7,80	51	57	368	2" - 2"
<b>RF 812616</b>	80	55	43	64,50	2,80	33	37000	2	800	410	72	3,88	7,80	51	57	368	2" - 2"
<b>RF 812616</b>	100	55	27	102,80	7,90	72	37000	2	800	410	72	3,88	7,80	51	57	368	2" - 2"
<b>RF 812616</b>	100	55	32	84,90	6,60	59	37000	2	800	410	72	3,88	7,80	51	57	368	2" - 2"
<b>RF 812616</b>	100	55	36	71,20	5,60	50	37000	2	800	410	72	3,88	7,80	51	57	368	2" - 2"
<b>RF 812616</b>	100	55	43	48,30	3,80	33	37000	2	800	410	72	3,88	7,80	51	57	368	2" - 2"
<b>RF 821616</b>	80	55	27	118,10	9,10	51	37000	2	800	410	72	3,88	7,80	51	57	385	2" - 2"
<b>RF 821616</b>	80	55	32	97,70	7,60	42	37000	2	800	410	72	3,88	7,80	51	57	385	2" - 2"
<b>RF 821616</b>	80	55	36	81,90	6,40	35	37000	2	800	410	72	3,88	7,80	51	57	385	2" - 2"
<b>RF 821616</b>	80	55	43	55,50	4,30	23	37000	2	800	410	72	3,88	7,80	51	57	385	2" - 2"
<b>RF 821616</b>	100	55	27	136,20	5,90	54	37000	2	800	410	72	3,88	7,80	51	57	385	2" - 2"
<b>RF 821616</b>	100	55	32	115,50	5,00	29	37000	2	800	410	72	3,88	7,80	51	57	385	2" - 2"
<b>RF 821616</b>	100	55	36	99,20	4,30	25	37000	2	800	410	72	3,88	7,80	51	57	385	2" - 2"
<b>RF 821616</b>	100	55	43	71,20	3,10	18	37000	2	800	410	72	3,88	7,80	51	57	385	2" - 2"



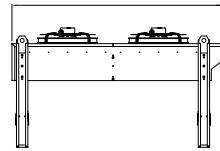
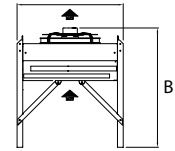
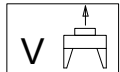
C



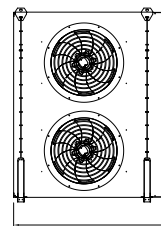
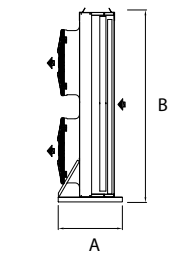
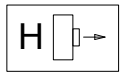
Modello Model	A	B	C
RF-511-H	545	884	1080
RF-511-V	935	1050	1080
RF-611-H	720	1165	1320
RF-611-V	1205	1296	1320
RF-811-H	800	1260	1930
RF-811-V	1305	1495	1930



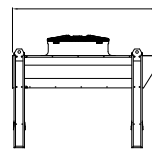
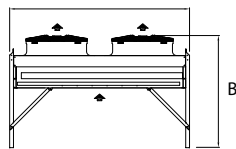
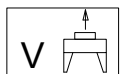
C



Modello Model	A	B	C
RF-512-H	545	934	1880
RF-512-V	935	1050	1880
RF-612-H	720	1219	2320
RF-612-V	1205	1296	2320
RF-812-H	800	1260	3505
RF-812-V	1305	1495	3505



C



Modello Model	A	B	C
RF-521-H	545	1699	1080
RF-521-V	1735	1050	1080
RF-621-H	720	2164	1320
RF-621-V	2205	1296	1320
RF-821-H	800	2305	1930
RF-821-V	2405	1495	1930